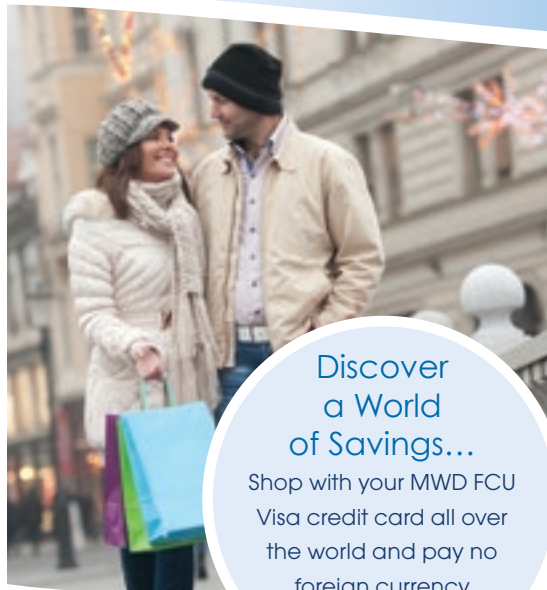


FINANCIAL *flow*



Discover a World of Savings...
Shop with your MWD FCU Visa credit card all over the world and pay no foreign currency exchange fees!

Introducing a New Level of Security with Chip Cards

MWD FCU is adding chip technology to its Visa® credit cards! Now the global standard for credit cards, chip cards offer much greater security for in-store payments than traditional cards. Here's why:

• Unique Codes

Chip cards generate a unique code every time they're used at a chip-enabled terminal. This means that even if the code is stolen, it cannot be used again to commit a fraudulent transaction.

• Difficult to Copy

The encrypted microchip embedded in a chip card stores information required to authenticate, authorize and process transactions – making it virtually impossible to create a counterfeit chip card.

To use a chip card, simply insert it into a chip-enabled terminal and leave it there until you're prompted to sign or enter a PIN. Then remove your card, and away you go!

Please note: Chip cards will be made available to MWD FCU cardholders upon renewal of their current card or by request. For additional information, contact us today!

Peggy's Note



From all of us at MWD FCU, we want to wish you a happy and prosperous new year! We're excited for what the future holds, but we can't resist looking back one more time at our 2015 highlights, which include:

- Adding remote deposit and person-to-person payments to our mobile website
- Introducing a new and improved statement design
- Launching a more informative and easier-to-navigate website
- Implementing chip technology on our Visa credit cards
- Reducing rates on recreational vehicle loans
- Reestablishing our Field Ambassadors program

Moving forward in 2016, we look forward to helping our members save money and reach their dreams – two goals that have been central to MWD FCU since our founding in 1956. In keeping with these goals, we encourage all those with high-rate holiday debt to transfer their balances to a low-rate MWD FCU credit card. And if you need to borrow money, look to us first so you can enjoy our competitive loan rates, flexible terms and affordable payments.

Thank you for giving us the opportunity to serve you!

ADDRESS
MWD Federal Credit Union
700 N. Alameda St.
Los Angeles, CA 90012

PHONE NUMBERS
24-Hour Express Teller: 213.217.5724
Office Telephone Number: 213.217.6612
24-Hour Fax Line: 213.217.6010

MEMBER SERVICES
memberservice@MWDFCU.org
Website: www.MWDFCU.org

OFFICE CLOSINGS
New Year's Day.....January 1
Martin Luther King, Jr. Day.....January 18

Presidents' Day.....February 15
Good Friday.....March 25
Cesar Chavez's Birthday.....March 31

PLEASE JOIN US FOR OUR ANNUAL MEETING

The Annual Meeting of MWD Federal Credit Union will be held on Wednesday, March 23, 2016, in the MWD Headquarters Building Courtyard Café. The meeting will be called to order at 2:00 p.m.

There are three (3) three-year terms and one (1) two-year term expiring on the Board of Directors.

The Nominating Committee will accept nominations by petition on behalf of anyone wishing to run for an expiring term on the Board of Directors. Nominations from the floor will not be accepted. An election will only be conducted by ballot if there are more nominations than expiring terms on the Board of Directors.

Eligible members who are interested in serving as a Credit Union Director or would like to nominate another eligible member for election to the MWD FCU Board are encouraged to contact the credit union at 213.217.6612.

Nominations should be made as soon as possible but **no later than February 5, 2016.**

The following four Directors have been renominated for election by the Nominating Committee:

Chris Beggs

Chris Beggs has been an employee of MWD for over 20 years and is currently Team Manager of Engineering Services, Materials & Metallurgy Team. He has been a member of MWD Federal Credit Union for 20 years and has served as a Director of MWDFCU since 2010. He chaired the Executive Search Committee which resulted in hiring the credit union's present CEO. Chris holds M.S. and M.A. degrees in Environmental Studies and Executive Management/Business Ethics from Cal-State University and Claremont Graduate University respectively. Member satisfaction is one of the interests of his tenure, and his La Verne work location facilitates feedback from the membership on MWD FCU operations.

Hamid Esfahani

Hamid Esfahani has been an employee of MWD and a member of the credit union since 1988. He is currently a Program Manager employed in Water System Operation in charge of power scheduling and energy trading activities. He is currently serving as a member of the MWD FCU Board of Directors, where he is Treasurer and Chair of the Asset Liability Committee. His previous roles included serving as a member of the MWD FCU Finance Committee, the MWD FCU Operations & Personnel Committee and the MWD FCU Supervisory Committee. Hamid holds a Master of Science in Electrical Engineering and represents MWD on various regional committees responsible for making policies in the electric industry. He is the current Vice President of the MWD Persian American Employee Organization. He possesses a strong understanding of the MWD FCU issues, both operationally and financially.

Deborah Ng

Deborah Ng has been a member of MWD FCU since 1990, where she has served on the MWD FCU Board of Directors since 1995. She is currently serving as Chairman (2014 & 2015) and was the Vice-Chairman for the previous four years. Deborah holds a Master of Business Administration – Finance & a Bachelor of Science – Banking & Finance.

Jose Sanchez

Jose Sanchez has been an employee of MWD and a member of the credit union since 1987. He has served on the Board of Directors for 16 years. His roles on the Board include: Treasurer (2007-2013); Asset Liability Committee (2007-present); Marketing Committee (2007-present); Operations & Personnel Committee (1996-1999, 2007-present); and Dividend & Loan Policy Committee (1990-1994). Jose holds a B.A. (Economics) from UCLA and an MBA (Finance emphasis) from University of Iowa. He believes in the credit union's not-for-profit model that returns maximum value to its members, certainly more so than the big bank alternative. No other source of financial services tailors its mission so closely to the needs of employees of Metropolitan, and we are fortunate to have that benefit here for the employees. Maintaining those services and focusing on how to improve them specifically for our members, while ensuring the safety and security of the financial assets our members entrust to our credit union, are his primary goals as a member of the Board of Directors.

Peggy McCauley, CEO

BOARD OF DIRECTORS
Debbie Ng – Chair
Michael Cooper – Vice Chair
Hamid Esfahani – Treasurer
Sheri Shaffer – Secretary

Lorraine Aoy
Chris Beggs
Drew Boronkay
Garry Bryant
Jose Sanchez

SUPERVISORY COMMITTEE
Catherine M. Stites, Chair

Retiring Soon? DON'T LEAVE YOUR BANKING BEHIND!

If you're planning to retire in the near future, you'll be happy to know it's now easier than ever to stay connected to MWD FCU. Convenient account access is available through ATMs, Shared Branches and even our new and improved mobile app! Use the app to view account balances, make transfers and check transaction history – and also enjoy these brand-new features:

- ✓ Deposit checks with your smartphone or tablet – anytime, anywhere!
- ✓ Make real-time, person-to-person payments. (No checks, no cash, no kidding!)

To download the new mobile app, just search for MWD FCU in the Apple® App Store or Google Play™.



NONE OF THE STRESS. *All of the Fun.* AUTOLAND MAKES CAR BUYING EASY!

As an MWD FCU member, you have access to Autoland – the hassle-free car buying service! Get the vehicle you want at a great price (without having to endure any haggling headaches) by letting Autoland:

- Do the legwork to find your perfect new or pre-owned car.
- Secure a great price with all available manufacturer incentives.
- Coordinate your auto loan with MWD FCU.
- Get you a great value for your trade-in.
- Conveniently deliver your vehicle to the MWD FCU branch.



Call 800.234.6999 for more details or visit Autoland.com to start your car search. It's easy!

MEMBERS ARE INVITED TO MONTHLY BOARD MEETINGS

When: January 27, February 24 and March 30 at 11:00 a.m.

Where: Union Station Bldg., Rm. 4-599

By mail: 700 N. Alameda St., Los Angeles, CA 90012

